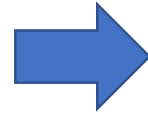
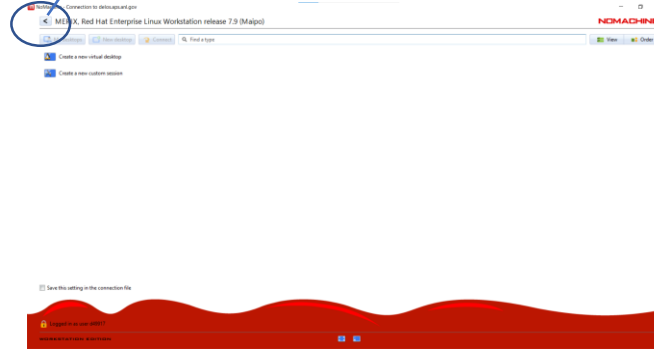


# How to connect beamline computer's "Physical window"

When connected via client  
First following window comes



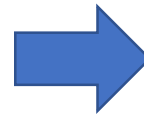
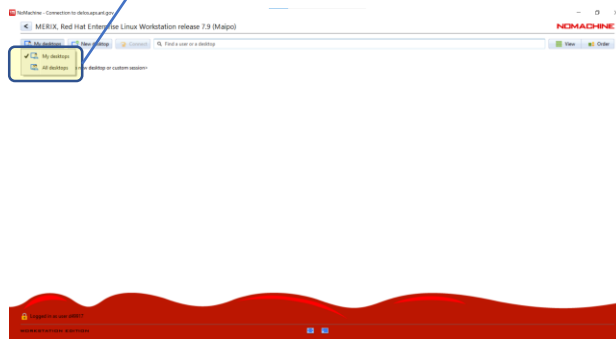
Click on the back button on  
The top left side



Following window comes with two options:  
"My desktops" and "New desktop".



Click on "My desktop" and select  
in drop down menu the other  
Option "All desktops"



Following window with name "Physical  
window, ixS.." comes on.  
Click on the connect beamline computer

