

RADIATION SAFETY AT APS DURING COMMISSIONING

BETH HEYECK
MANAGER, RADIOLOGICAL USER FACILITIES
RP DIVISION

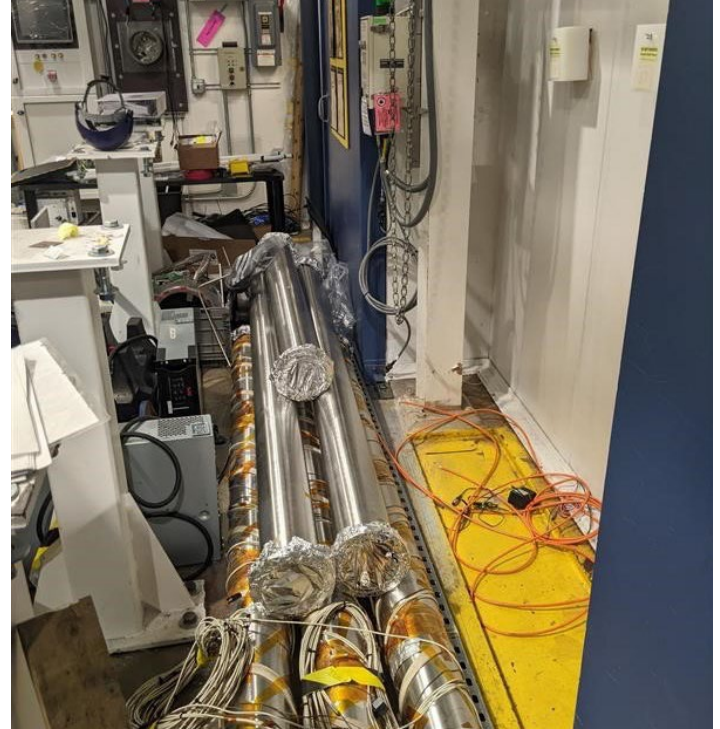
MACHINE COMMISSIONING SURVEYS

Access
to storage
ring wall

Storage ring
mezzanine

Beamline
enclosures

Utility
corridor



SHIELDING STUDIES

Restricted
access
periods

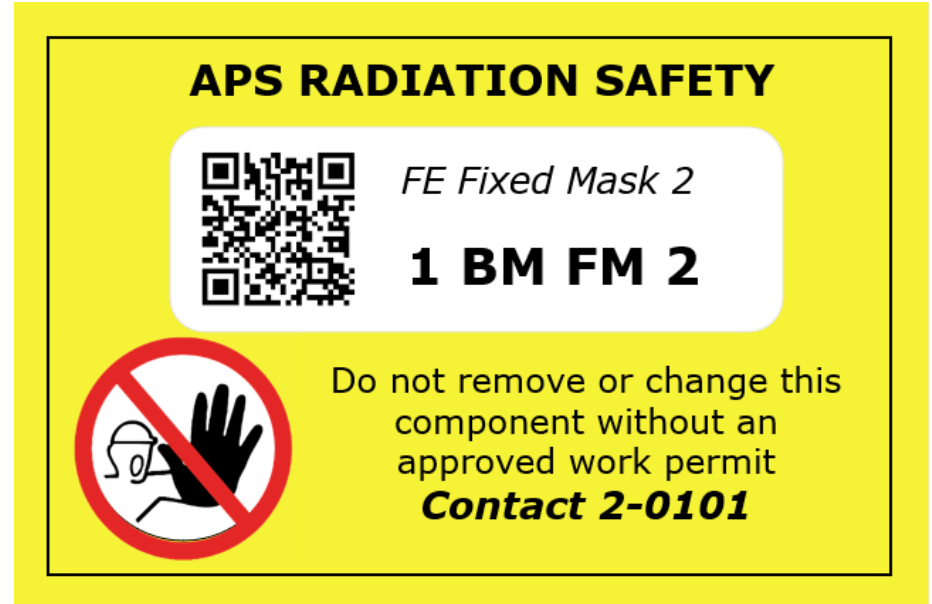
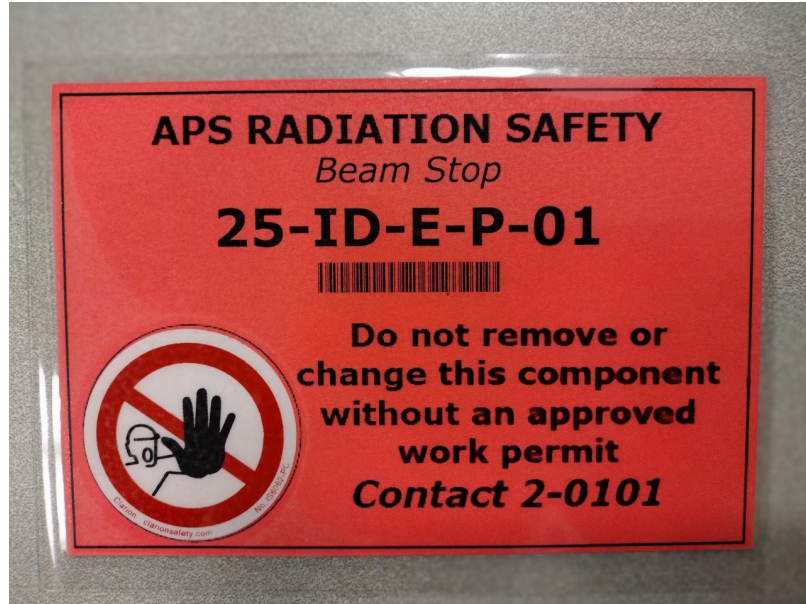
Specific loss
studies

Vacuum
conditioning

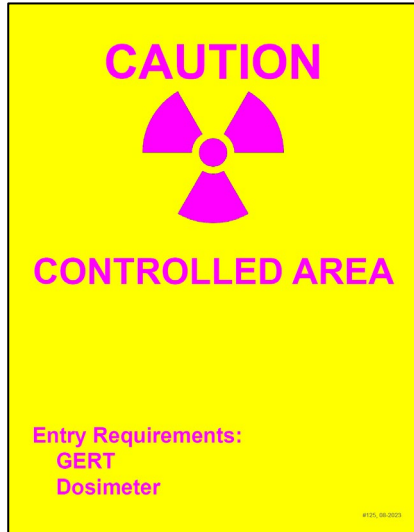


RADIATION SAFETY SYSTEMS

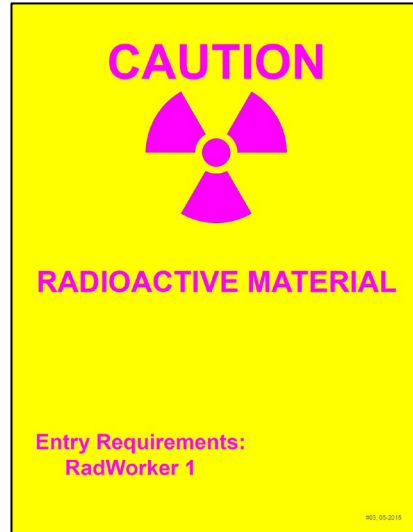
RSS



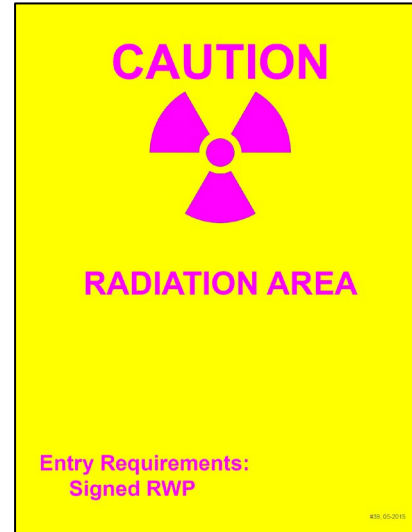
RADIATION POSTINGS



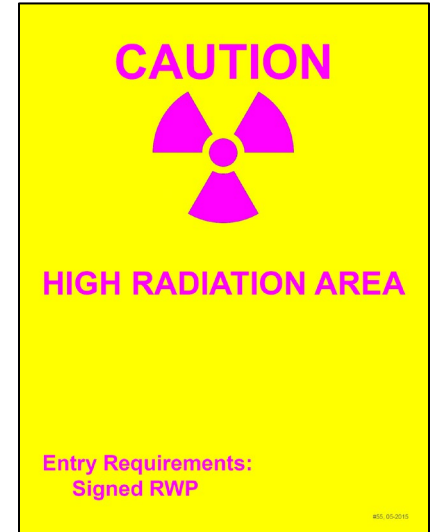
Experiment Hall:
Controlled
Area



Source Areas:
Radioactive
Material Areas



Local:
Radiation Areas
(5-100 mrem/hr)



Loss Studies:
High Radiation Areas
(>100 mrem/hr)

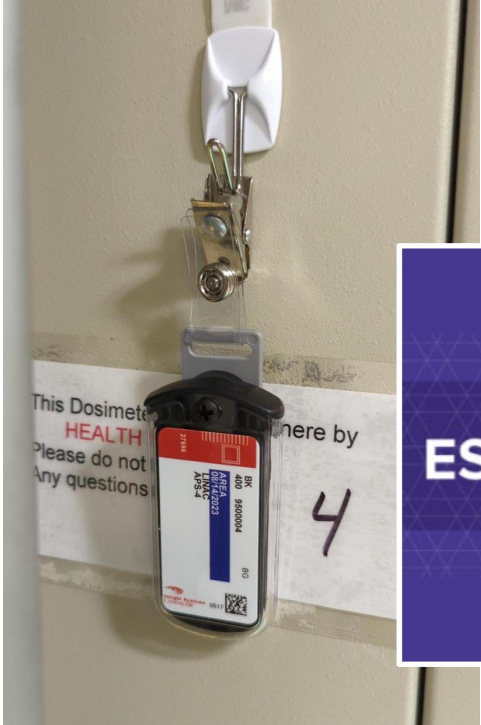
DOSIMETRY

Required March 11, 2024

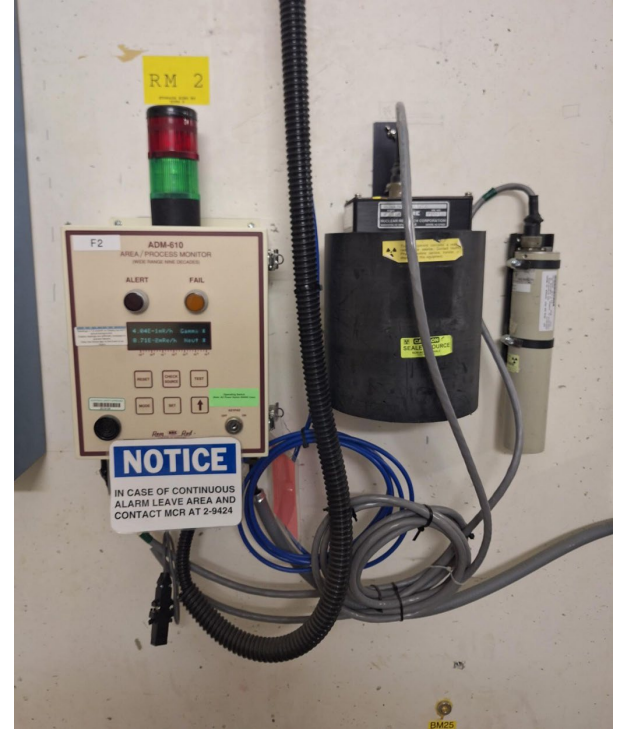
Personnel requirements

Area dosimetry

Escort policy



RADIATION MONITORS



BEAMLINE COMMISSIONING

Staggered
beamline
commissioning

Restricted
access during
commissioning

Radiation
surveys
(min. 3 per beamline)



RADIOLOGICAL PROTECTION

Contacts

Mike Henry

Chief Health Physics Technician

Phone: 2-3977

Health Physics

Technician Office

Phone: 2-3418

Beth Heyeck

Manager

Email: ehyeck@anl.gov

John Edwards

APS Health Physicist

Email: edwardsj@anl.gov