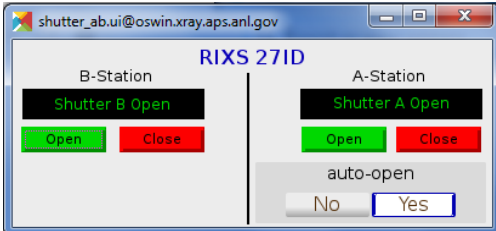


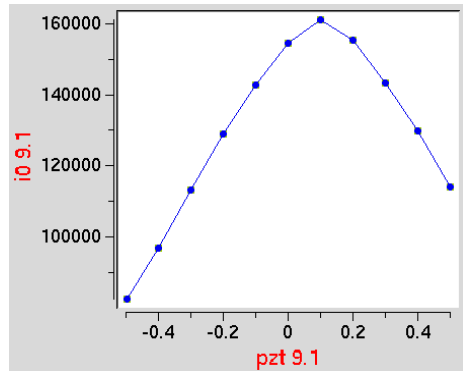
What to do after a beam dump

1. Check the incident counts (especially i0 and i2). If they look ok then there is no need to be concerned. If they are low abort the macro and continue with this procedure.
2. Make sure the station A and station B shutters are open



3. Wait 10 minutes after the beam dump with the shutters open so that the primary mono can heat up 90% of the way.
4. To maximize i0 type this

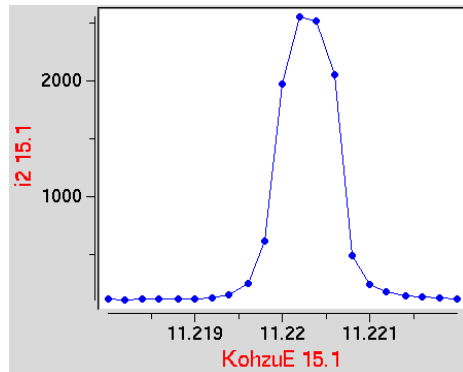
- a. `plotsselect i0`
- b. `dscan pzt -0.5 0.5 10 1`



- c. `umv pzt pl_xMAX`

5. If i2 is low type the following

- a. `plotsselect i2`
- b. `dscan kohzuE -0.002 0.002 20 1`



- c. `umv kohzuE pl_xMAX`