

Configure Accel Auth Connection on Windows 7

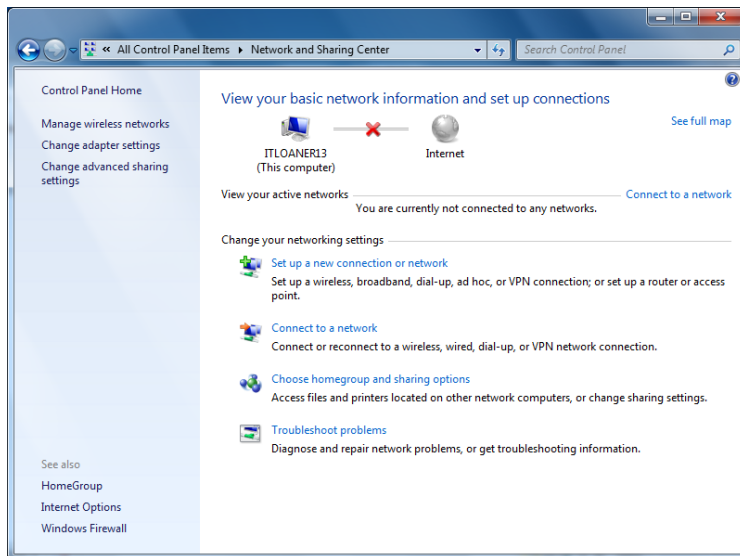
mlw 5/3/2013

Step 1 You may need to remove existing Accel Auth profile

If an Accel Auth profile exists on your system, you may need to remove it and recreate it according to this document.

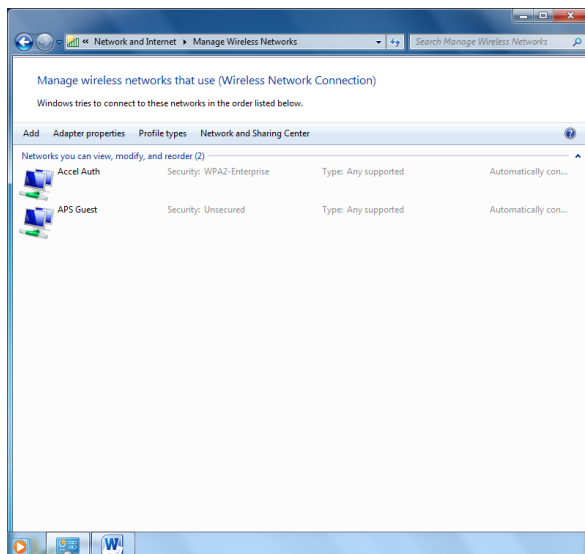
Start->Control Panel

If you are in “Category View”, select “Network and Sharing Center”

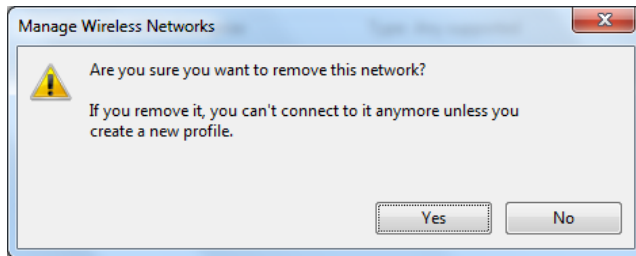


Click on “Manage Wireless Networks”

Right-click on “Accel Auth” and select “Remove network”



You will be prompted to confirm the removal. Click on “Yes”.

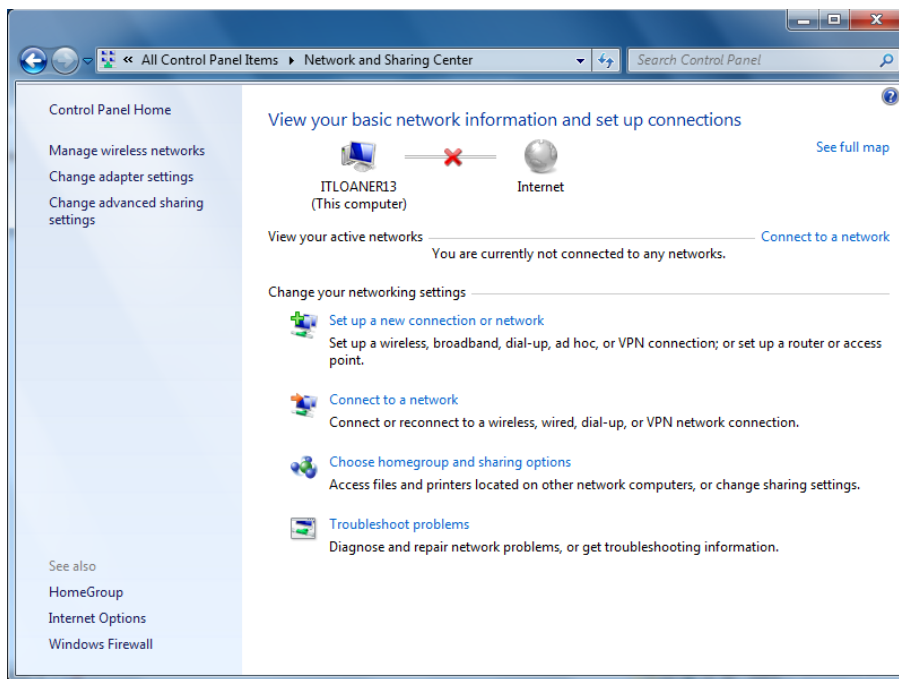


Step 2 Add Accel Auth profile, configure as follows:

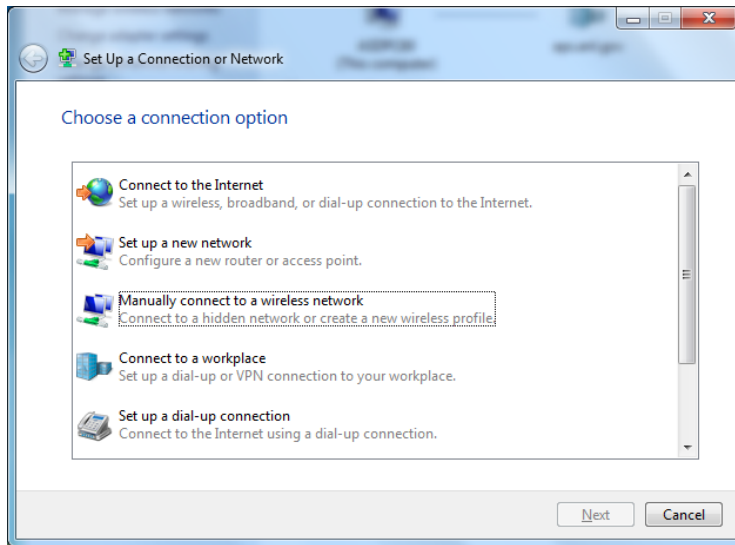
Start->Control Panel, check the Control Panel view setting,

- If the Control Panel view is set to “Category”, select “View network status and tasks” under the heading “Network and Internet”
- If the Control Panel view is set to “Large icons” or “Small Icons”, select Network and Sharing Center

Click on “Setup a new connection or network”



Select “Manually connect to a wireless network” and click on “Next”



Configure as follows:

For Network name enter “Accel Auth”

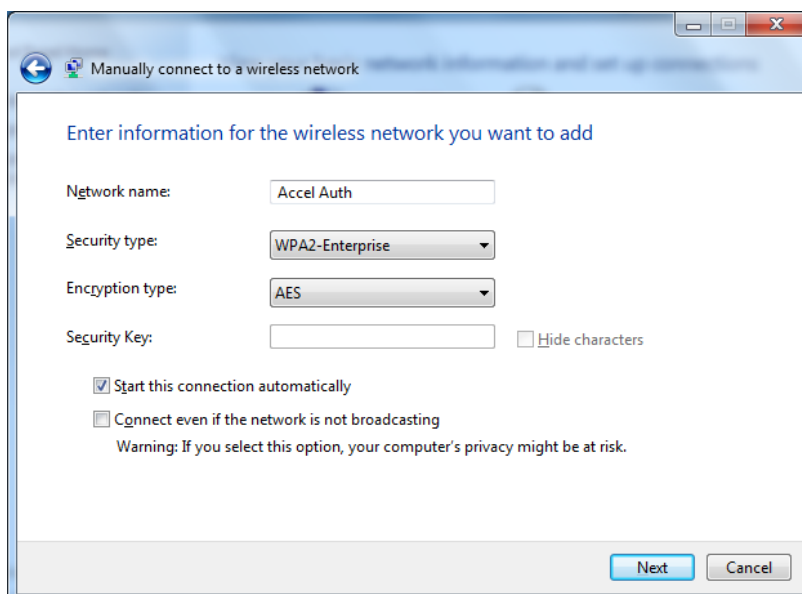
For Security type, select “WPA2-Enterprise” with Encryption type: “AES”

Leave “Key” blank

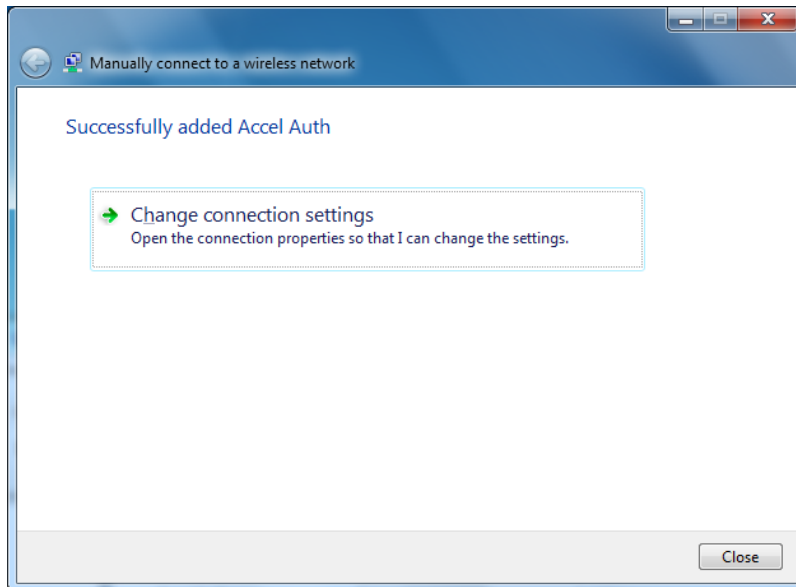
Leave “Start this connection automatically”, checked.

Leave “Connect even if network is not broadcasting”, unchecked.

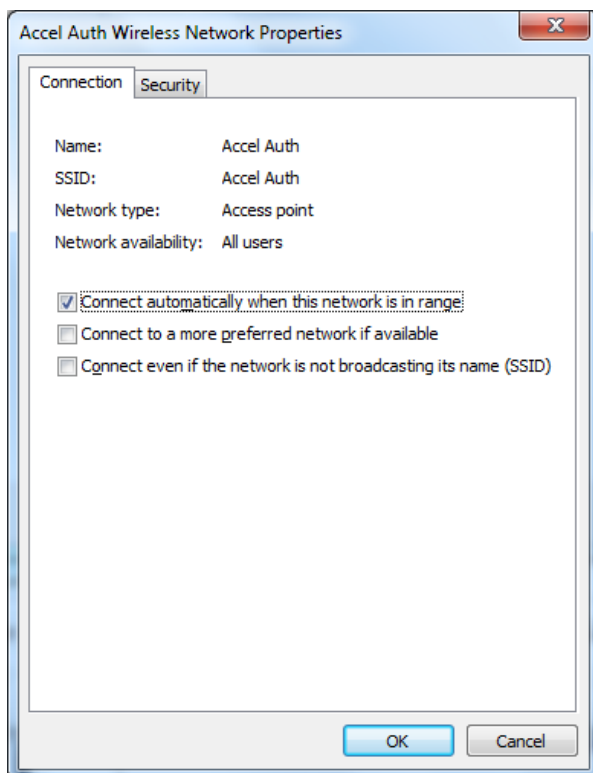
Click on “Next”



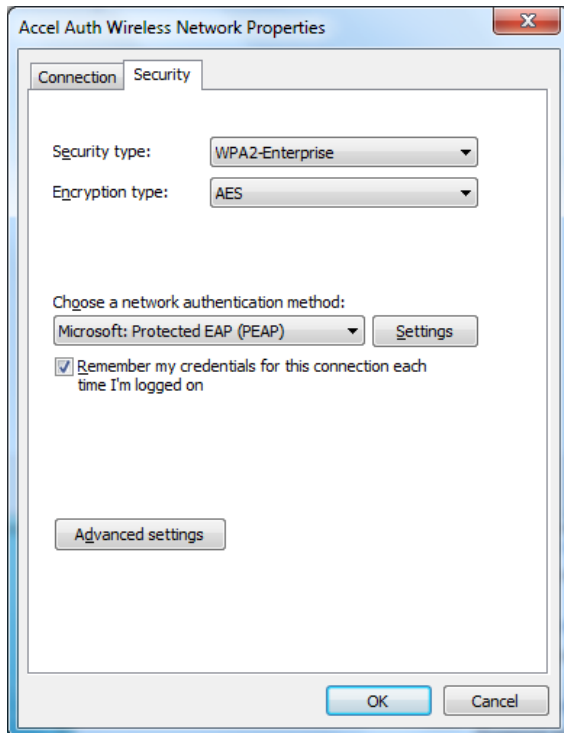
Click on “Change connection Settings”



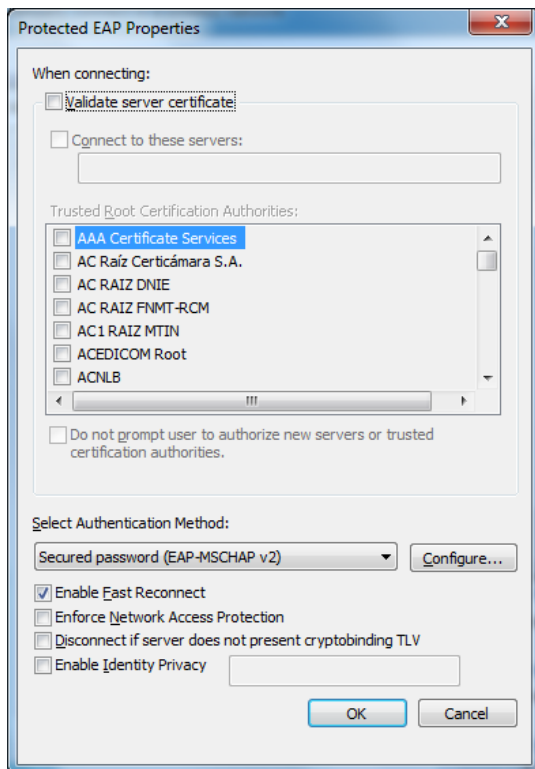
On the “Connection” tab, leave “Connect automatically when this network is in range”, checked.



Click on the “Security” tab,



Click on the “Settings” button to the right of “Microsoft Protected EAP (PEAP),

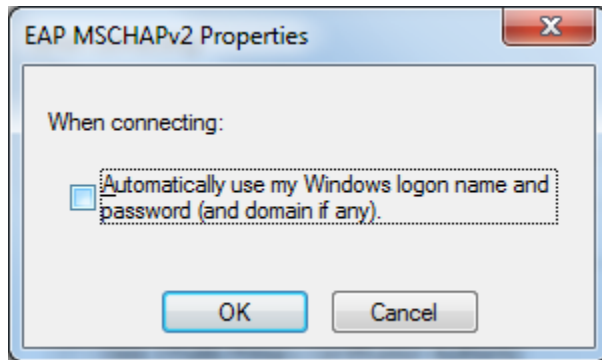


Uncheck "Validate server certificate"

Leave "Enable Fast Reconnect" (at the bottom) checked and all others unchecked.

Click on the "Configure" button to the right of Secured password (EAP-MSCAHP v2)

Uncheck "Automatically use my Windows login name and password..."



OK

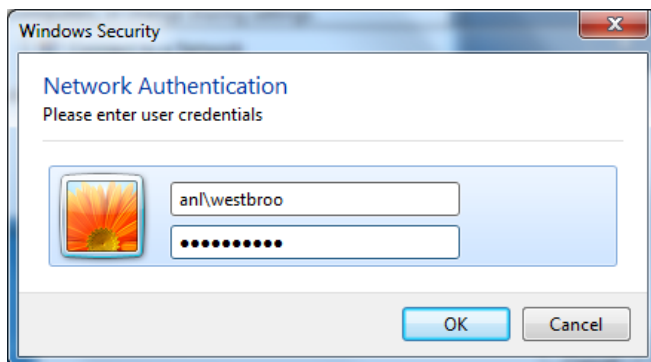
OK

You should see a popup near the system tray which states:

Additional information is needed to connect Accel Auth. Click to provide additional information.

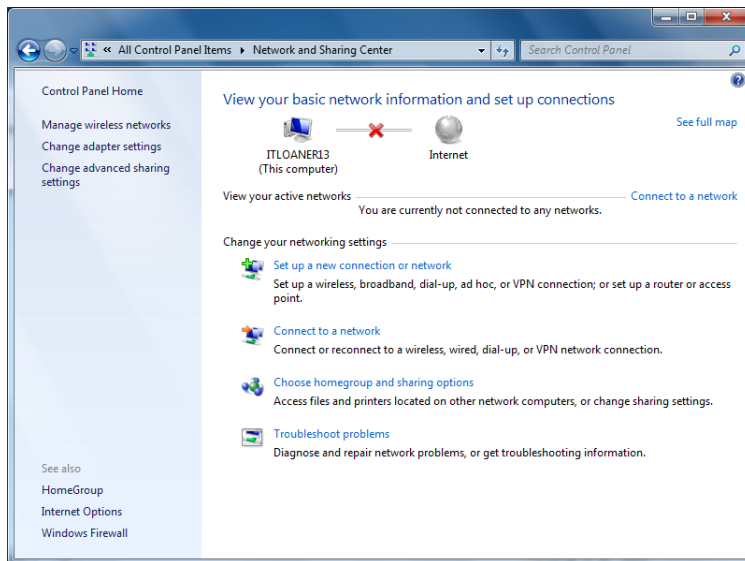
Connect to Accel Auth, by entering your ANL credentials in the "Network Authentication" pop-up window. Enter your username as "ANLUsername" or "ANL\ANLUsername". Enter your ANL password.

Click on OK.



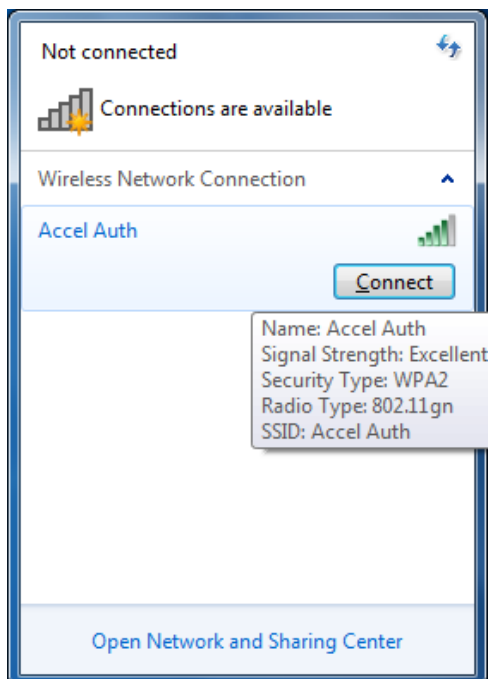
Step 3 After the initial configuration of Accel Auth, you can connect and disconnect as follows:

Start->ControlPanel->Network and Sharing Center



Select "Connect to a network"

Select "Accel Auth" and click on "Connect"



Note: Your Accel Auth connection may continue to work even after you change your ANL password. However, if it doesn't, you will need to remove the Accel Auth profile and re-add as described above.