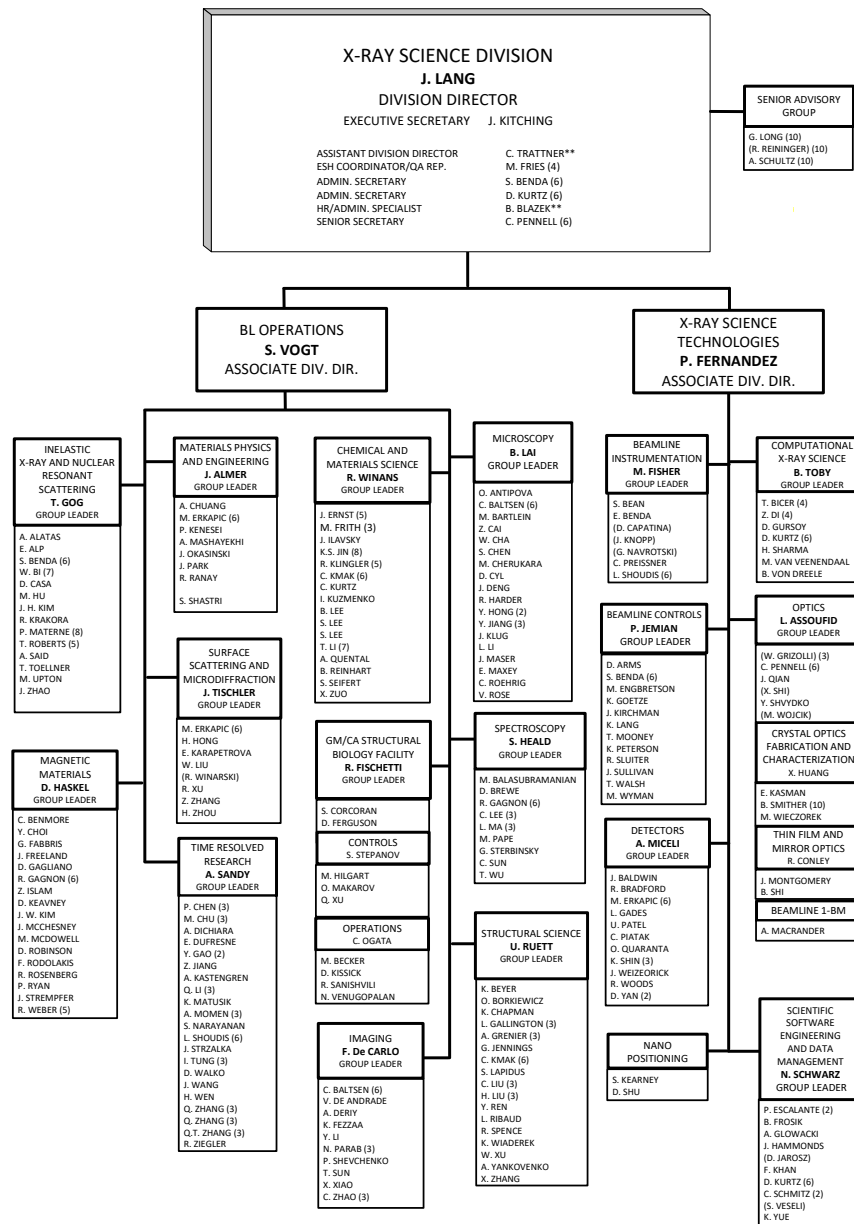




NATIONAL LABORATORY



EMPLOYEES MATRIXED ≥ 50% TO APS UPGRADE ARE LISTED IN HOME DIVISION WITH NAME IN PARENTHESES

KEY:

- * REPORT TO THE LABORATORY DIRECTOR
- ** REPORT TO PSC BUSINESS MANAGER
- (1) INTERIM
- (2) STUDENT
- (3) POSTDOCTORAL
- (4) OTHER DIVISION
- (5) ARGONNE ASSOCIATE
- (6) MULTIPLE ASSIGNMENT
- (7) CONTRACT PERSONNEL
- (8) VISITING FACULTY/SCIENTIST
- (9) LEAVE OF ABSENCE
- (10) EMERITUS

J. Lang

APPROVED: J. Lang
Director

EFFECTIVE: April 2, 2018
4/3/2018
DATE