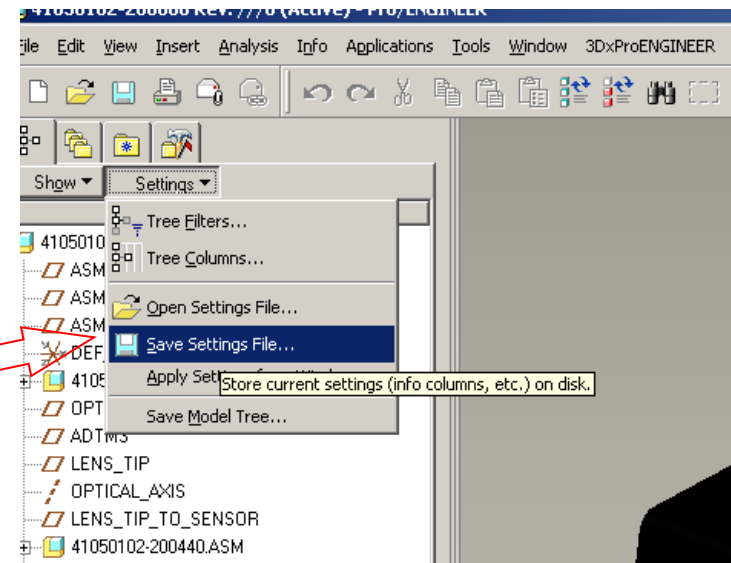
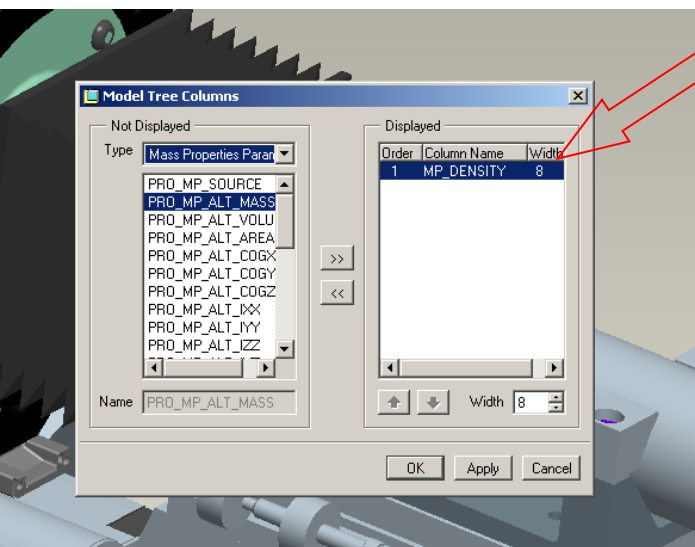
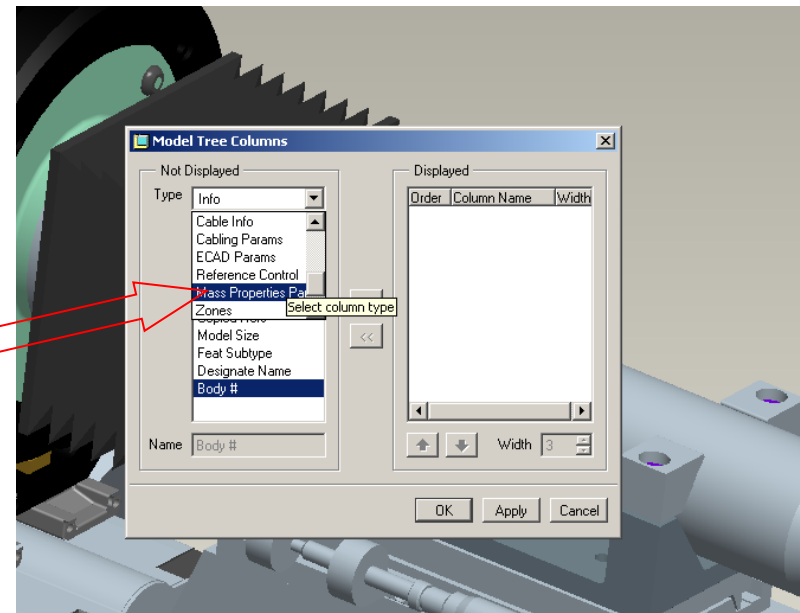
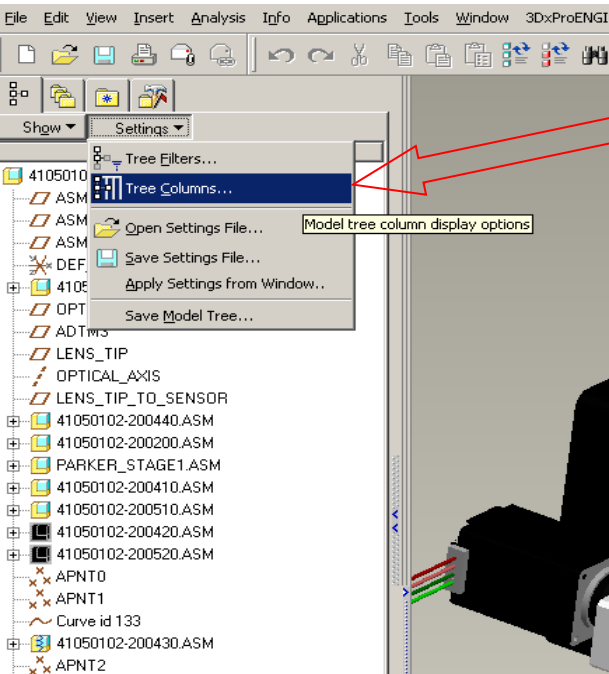


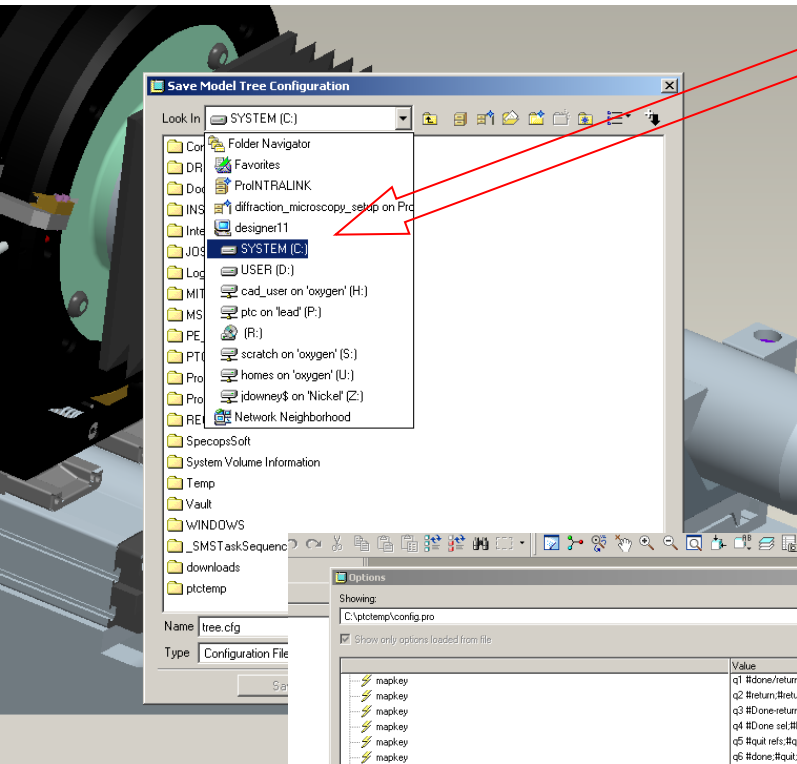
# ADDING COLUMNS TO MODEL TREE

SETTING TREE COLUMN DISPLAY OPTIONS

SAVING TREE.CFG FILE TO LOCAL DRIVE

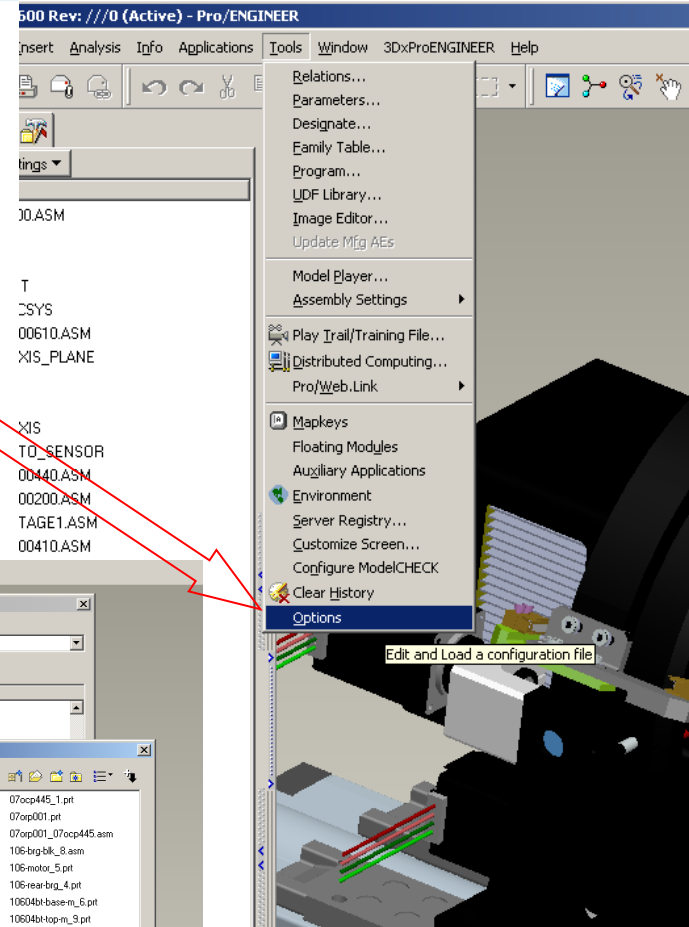
SPECIFYING PATH IN CONFIG FILE TO LOAD TREE OPTIONS





5. SELECT FOLDER FOR TREE.CFG FILE.  
C:\PTCTEMP

6. UNDER THE TOOLS DROP DOWN SELECT OPTIONS.



7. SEARCH FOR MDL\_TREE\_CFG\_FILE  
SELECT BROWSE, FIND THE FOLDER YOU SAVED TREE.CFG  
C:\PTCTEMP

